



WILMAT DEVELOPMENT FOUNDATION
Willingness Matters

2021-22 ANNUAL REPORT

Building Back Better



CONTACT:

+256 393 224 664
+256 789 936 029

P.O.BOX 6982, Kampala (U)
info@wdfug.org

f t i in y
www.wdfug.org



WILMAT DEVELOPMENT FUND
W/Mogaza Market

TABLE OF CONTENT



CONTENT:

PAGE:

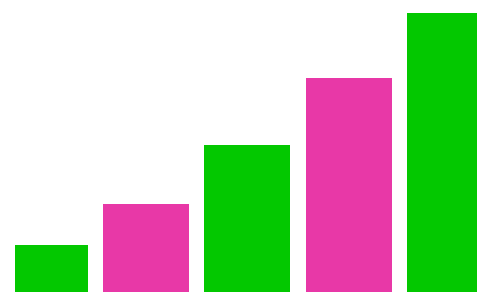
🌐 Disclaimer	4
🌐 Our History	6
🌐 Vision and Mission	7
🌐 Team Leader's Message	9
🌐 Board Chair's Message	10
🌐 How we Do It	12-13
🌐 Our Core Operations	14
🌐 2021-2022 Lense	16
🌐 Project Impact	18-37
🌐 Regional Engagement Tracker	39
🌐 Financial Performance	40-43
🌐 Our Associates	45
🌐 Our Amazing Teams	47-48
🌐 Contact us	50





DISCLAIMER

The opinions expressed in this Annual Report are solely those of the people and Wimat Development Foundation made after carrying out the charitable acts of seeding kindness and note that these views do not reflect or pre-judge any future decisions to be taken by our stakeholders or policy makers.





OUR HISTORY

Wimat Development Foundation is a Community Based Organization registered as a Local NGO in Uganda that was founded on the notion of preventing and responding to the vulnerabilities faced by women and youth in the community.

In April 2017, WDF was fully registered as a Community Based Organization with registration number 178, in 2019 advanced to Company Limited by guarantee under URSB number 80020001599969 and in early February 2022, WDF acquired full registration as an Indigenous NGO with number INDR157134925NB at National NGO Bureau with the purpose of improving the livelihoods of the rural marginalized Women and youth in Uganda.

With the need to visualize the willingness of grass root communities, Strategic Partnerships have been established with 10 schools, 50 women Self Help Groups, active membership with the Movement for Community Led Development Uganda Chapter, Girls Not Brides and more in enhancing Community Led Solutions for sustainable Livelihood.

For 7 (Seven) years now, we have impacted at least 15,200 Beneficiaries in various communities of Uganda and across the globe with the need to enrich more lives through improved Livelihoods, Health, Socio-Entrepreneurship and Advocacy efforts in driving community Sustainable Development.

Together, we are empowering Adolescent Girls and Boys as Future Change Makers.

Building Back Better



#WillingnessMatters

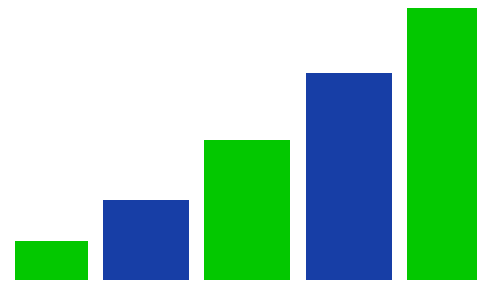


VISION

Building a community where women and Youth realize their full social, economic, and civic potential.

MISSION

Fostering community cooperation and independence of under-deserved women and youth to enable them to initiate and manage community-driven socio-economic and development processes.





TEAM LEADER'S MESSAGE



Dear **Supporters** and **Friends**,

I am delighted to present to you the Wimat Development Foundation's Annual Impact Report for the year 2021-2022. This report reflects our unwavering commitment to "**Building Back Better**" and showcases the remarkable journey of our organization over the past year.

In the face of challenges, we have continued to make a significant difference in the lives of women and youth in Uganda and beyond. Our dedication to promoting community-led development, empowering the underserved, and fostering partnerships has led to transformative outcomes.

This report provides insights into our accomplishments, the stories of individuals whose lives we've touched, and our plans for the future. As we look ahead, we remain steadfast in our mission to enable women and youth to realize their full potential and contribute to community-driven socio-economic and development processes.

I want to express my deepest gratitude to our dedicated team, partners, donors, and supporters who have made our work possible. Your unwavering belief in our vision has been the driving force behind our success.

Thank you for being part of the Wimat Development Foundation's journey. Together, we are making a lasting impact, and together, we will continue to build a brighter future.

Sincerely,

jockas

Jockas Matte
Executive Director
Wimat Development Foundation (WDF)

#IAmWimat #WillingnessMatters

ACTING BOARD CHAIRPERSON'S MESSAGE



Dear **Partners** and **Supporters**,

I would like to express our profound gratitude to all our valued partners who have played an essential role in our journey throughout 2021/2022. The District Local Governments in which we operate, as well as the communities we serve, have shown remarkable cooperation and support, enabling us to make a significant impact.

I extend our sincere appreciation to the dedicated members of our Board of Directors (BOD), who have consistently provided invaluable support and guidance to our staff. Their technical assistance in the development and completion of WDF's New Strategic Plan for 2023/24-2029 is greatly appreciated.

I also want to commend our diligent staff for their outstanding efforts over the past years. Their meticulous planning, efficient implementation, and rigorous Monitoring and Evaluation of our programs have been instrumental in our success.

During this period, we have expanded our reach to include more women and youth, facilitating access to credit, increasing incomes, and improving access to healthcare services. Our inclusive agricultural programs, financial literacy initiatives, inclusive budgeting processes, and efforts in nutrition, WASH, Sexual and Reproductive Health Rights, gender-based violence mitigation, peace-building, and elderly literacy have empowered women and youth in diverse ways.

WDF has solidified its presence across various platforms and networks, and we are committed to guiding WDF to even greater heights in the future. Together, we will continue our mission to empower communities, foster development, and create positive change.

With gratitude and dedication,

sophie

.....
Ms. Sophie Kange
Acting Board Chairperson
Wimat Development Foundation (WDF)





United for a Healthier Community



Right2Grow



HOW WE DO IT!

Since inception, WDF has been working by inspiring and supporting local community members, local council leaders, community-based organizations, Local and International CSOs, government ministries and groups mainly Women, Youth and Children with an emphasis on establishing long-term solutions. Its achievements to date are:



STEP 1: Holding Focus Group discussions: WDF has continued to hold focus group discussions with several groups in various communities of Uganda in understanding the challenges of extreme poverty, health and livelihoods that limit a community's ability to reach their full potential. The criteria we use in the selection process include: need, readiness for a recovery project, participation commitment from the community and presence of strong leadership. The feedback has been informative and has continued to inform the organization's programming and development of various projects.



STEP 2: Research And Development: Since commencing of actual implementation of programs in 2017, WDF has continued to engage community members, national and International strategic Partners in the identification and development of various Programs ranging from community capacity Skills Vocational programs, sexual reproductive health for adolescents, care for the young positive women and elderly, Relevancy of Smart Organic Farming in Rural and semi-urban communities, Impact of Village Savings and Loans Association for Women Empowerment programs, Household Mapping on Food Nutrition and WASH practices in Busoga region among others.



STEP 3: Establishing a framework for sustainable growth and community development: WDF has continued to promote and encourage community-based approaches aimed at building resilient and self-reliant communities for sustainable development. Every project is customized to respond to the needs and priorities identified by the village. Discussions and workshops are held to gather information and to bring to light the villagers' strengths, assets, experience and expertise as everyone is given a voice in the development of sustainable approaches. The foundation has formed so far over 30 community-led groups through the farmer field schools' approach.





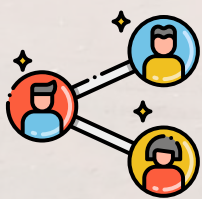
STEP 4: Holding fundraising activities to increase engagement and raise awareness: WDF has been conducting various fundraising initiatives that have indeed increased the resource base of the organization as a support base towards executing our activities at the grassroots. We believe that in order to end extreme poverty, change must come from within. Our work is built upon the fundamentals of empowerment, capacity building, village ownership and local leadership.



STEP 5: Supporting women-led savings groups: We believe that in order to end extreme poverty, change must come from within. Our approaches are built upon the fundamentals of empowerment, capacity building, village ownership and local leadership. WDF has and is still Supporting women-led businesses through facilitating onsite hands-on trainings, mentorship sessions, providing small business loans, group activities among others.



STEP 6: Mobilizing WDF Board members: Because every community that we work with is completely unique, WDF has continued to mobilize and recruit new Board Members and Trustees from time to time as a way to increase on Organizational development, credibility, accountability, Resource Mobilization and networking strength of the organization for our programs.



STEP 7: Linkage Creation: The WDF directors have made networking and connections with organizations and Individuals from within and around the globe say;- The Hunger Project Uganda, Movement For Community-Led Development (MCLD), Right2Grow fraternity, The Urantia Book Fellowship, GBV Prevention Forum, Rescue Women Foundation, ICPD25 under the UNFPA, GBV Prevention Network, National Youth Advocacy Platform (NYAP) under Community Integrated Development Initiative (CIDI), Einstein Rising among others.



OUR CORE OPERATIONS



Livelihoods and Socio-Economic Empowerment



Mitigating Early & Forced Child Marriages and Promoting SRH



Nutrition, Water, Sanitation, and Hygiene (WASH)



Climate Change Mitigation and Environmental Sustainability



Gender Mainstreaming and Peacebuilding



SUSTAINABLE DEVELOPMENT GOALS

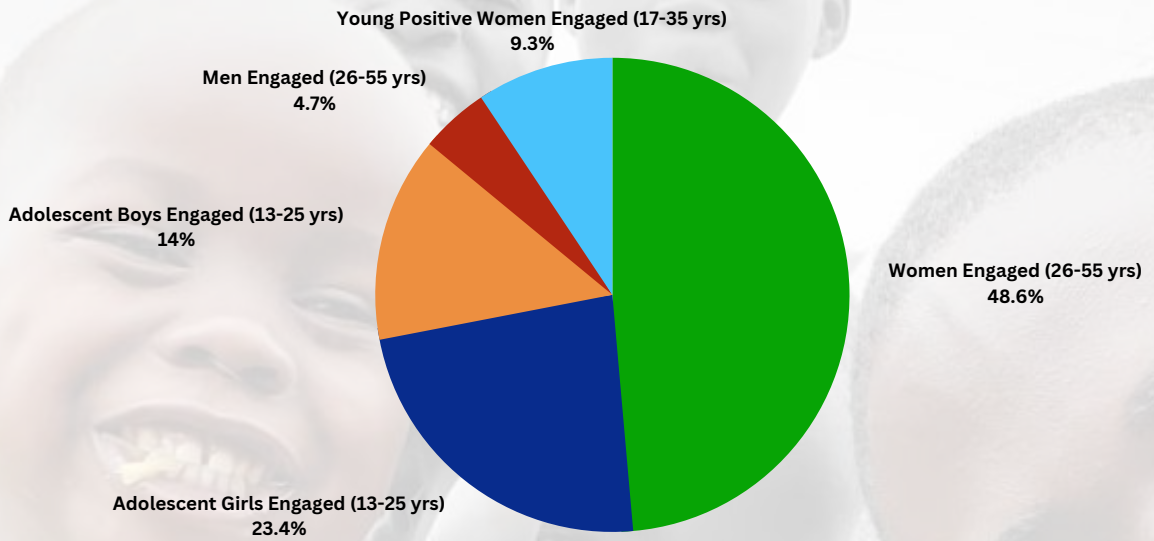


15

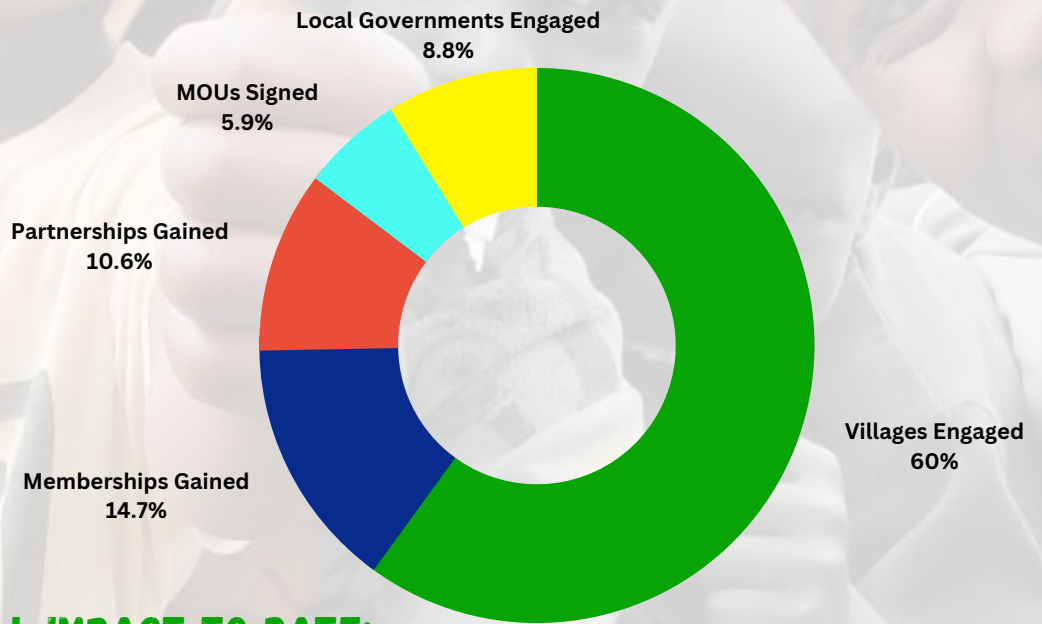


2021-2022 LENSE

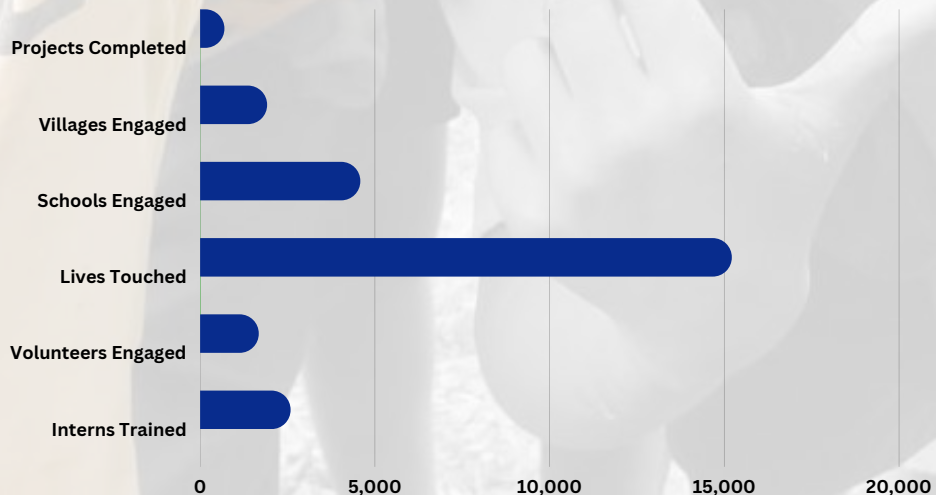
A) CATEGORIES OF COMMUNITY MEMBERS ENGAGEMENT:



B) OUR REACH SO FAR:



C) OUR OVERALL IMPACT TO DATE:







BIKASAVE-VSLA MODELING FOR IMPROVED HH INCOMES

The Bikasave [VSLA Modeling] is a significant and impactful program that was initiated by Wimat Development Foundation and being piloted in Mayuge, Kayunga and Kasese districts of Uganda. Since 2018, through this program, the foundation has introduced Village Savings and Loan Associations (VSLAs) to empower the community, particularly women, young positive women, and youth to save and invest jointly, leading to transformative changes within the communities served.



HOW WE DO IT:

- 01 VSLA Establishment:** WDF introduced the concept of VSLAs to the communities in Mayuge, Kasese and Kayunga district after engaging them through farmer groups on established Demo Farms. VSLAs are community-based groups where members pool their savings, access small loans, and invest collectively in income-generating activities.
- 02 Community Engagement:** The foundation actively involved the community members in the process of setting up and managing the VSLAs, ensuring ownership and sustainability of the initiative.
- 03 Capacity-Building:** Training and capacity-building sessions were conducted to educate VSLA members about the principles of saving, loan repayment, and investment decision-making.
- 04 Community-Led Approach:** The program was implemented using a community-led VSLA methodology, allowing the community members to take the lead in managing their savings and investments.



OUR KEY MILESTONES FOR 2021-2022:

1

Sustained Operations: An impressive 87% of the 55 initiated VSLA groups in Mayuge, 5 in Kasese and 5 in Kayunga districts continue to operate, indicating the program's success and the commitment of the community members.

2

Economic Empowerment: Women and youth (2,285 savers) in Mayuge, Kasese and Kayunga districts have taken the lead in starting their own small-scale businesses and venturing into farming, leading to increased income and economic independence.

3

Education Support: The program has facilitated 50 women in sending their children to school, ensuring access to education and improved opportunities for future generations.

4

Housing Improvement: 10 (Ten) VSLA members mostly women have been able to build their own houses, demonstrating how joint savings and investment can lead to improved living conditions and asset-building at the grassroots level.

5

Coping with Emergencies: By mobilizing local savings, 12 VSLA groups in Mayuge have developed a safety net to cope with emergencies and manage household cash-flow effectively through Parish Development Model cash.

6

Social Networks and Trust: The Bikasave/VSLAs have enabled immediate community banking solutions to rural communities enabling members to develop a saving culture and access to revolving microcredits (given from the savings) in order to meet quick domestic needs and investments in agriculture and small businesses.

7

Savings Culture penetration: Through the Bikasave methodology, 55 savings have increased and currently owning total saving portfolio worth Ush 325,000,000 an average of 142,232 per saver.



WHAT WE SEE:



Meet Ms. Kalikumadhi, a mother of 6 and a widow who managed to construct a 4 bedroom house as a result of the VSLA group savings and credit in Igunda Village, Imanyiro sub-county, Mayuge district. WDF supported with 6 bags of cement to complete her house.

Women in Savings group taking lead in holding each other accountable during one of the VSLA/BIKASAVE Community sitting as our Global Trainees watch in Mayuge, 2019



Enabling women Literacy in Savings groups through group learnings and sharing of personal experiences has triggered unity and social norms for sustainable development.





2

TULIME: EMPOWERING SMALLHOLDER FARMERS

The Tulime [Farmer-Field Schools] is a vital program implemented by Wimat Development Foundation in the rural communities of Uganda, recognizing the significance of the agro-based economy in the country. The program addresses challenges faced by farming communities, such as climate change, malnutrition, food insecurity, and poverty, and aims to enhance sustainability and build resilient communities.



HOW WE DO IT:

- 01 Focus on Diverse Activities:** The Tulime program involves community mobilization and engagement in various income-generating activities, including vegetable growing, poultry farming, and mushroom growing, among others. These activities offer opportunities for economic growth and diversification within farming communities.
- 02 Training and Capacity-Building:** We provide Climate Smart Agricultural based training and capacity-building sessions to farmers, Pre and post harvest handling, empowering them with the knowledge and skills needed for successful and sustainable agricultural practices.
- 03 Community Participation:** The program actively involves the community in decision-making and implementation, ensuring that the beneficiaries take ownership and actively participate in the initiative.
- 04 Market Linkage:** We grow and mentor our farmers to produce safe and healthy food that consumers enjoy by linking them directly to potential buyers in high paying markets for their fresh high-quality produce.



OUR KEY MILESTONES FOR 2021-2022:

- 1 Impact on Beneficiaries:** Over 4,800 beneficiaries have been impacted by the Tulime/Farm2Earn program, indicating its reach and significance in improving livelihoods of smallholder farmers in Rural Ugandan communities.
- 2 Economic Upliftment:** The program has led to the economic upliftment of individuals, particularly women and youth, through income generation from agricultural activities. We have enabled set up of 2 demonstration farms in Mayuge and Kasese, 10 poultry farms, 5 mushroom demonstration farms in Imanyiro sub-county, Mayuge, and 250 household backyard gardens and more.
- 3 Resilience Building:** By promoting sustainable farming practices and resilience-building techniques, the program has enabled creation of 45 farmer field schools for smallholder farmers to cope with the challenges posed by climate change, poor harvest handling and other factors.
- 4 Food Security:** Through the Tulime program, 4,800 smallholder farmers in the communities of Kasese, Mayuge, Kayunga, and Kamuli have increased their focus on agriculture contributes to food security, addressing issues of malnutrition and food insecurity in farming communities.
- 5 Poverty Reduction:** As smallholder farmers become economically empowered, there is a potential reduction in poverty levels in the targeted communities at household level with immediate access to markets for their produce through the Bikasave platform.

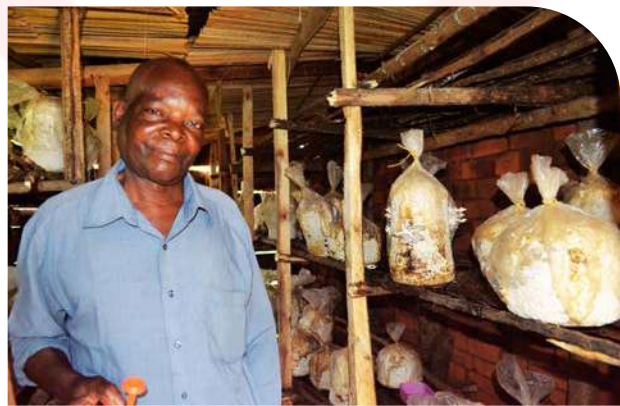


WHAT WE SEE:



Meet members of Musituke Tukole Savings group participating in poultry rearing of Saso chicken at Lugolole village since 2020. They started with 200 chicks and now have been selling eggs and chicken for meat to clients around and beyond Mayuge district.

Meet Mzee Israel from Lugolole village, Musituke Tukole Savings Group an initiative of Wilmat Development Foundation participating in Mushroom Growing as project for the group members since 2020.



Global Trainees participating in the hands on Backyard farming set-up at Anthill Foundation in 2018, Kaduyu road, Kampala

Busega Market Vendors in Kampala being trained on the need for proper pre and post harvest handling, customer handling and packaging of agri-products in Aug, 2022







3

TWOGERE: UNITING COMMUNITIES AGAINST GBV/VE

The Twogere: Uniting Communities against Gender Based Violence and Violent Extremism is a critical project implemented by Wimat Development Foundation, with a focus on addressing Gender-Based Violence (GBV) and violent extremism by promoting community active participation and prevention mechanisms. The project aims to empower women, youth, especially young women and girls, to actively participate in GBV prevention processes and advocate for their rights and welfare.



HOW WE DO IT:

- 01 **Safe space creation:** Through the "*Twogere*" program, WDF establishes safe spaces (GBV Prevention Forum) for survivors of gender based violence, young positive women and men, people affected by conflicts, natural calamities like floods, mud slides and displaced persons/refugees. We engage participants through our creative sessions of understanding GBV prevention, mitigation of early and forced marriages, teenage pregnancies, cyber crime, human rights, civic education and their impact on household development and community progress.
- 02 **Addressing Adolescent Challenges:** Under this program, WDF engages communities through the G2G (Girl2Girl) initiative aim that is implemented through our **3R** Approach of **R**escue, **R**estore and **R**ehabilitate young teen mothers and adolescents in selected semi-urban and rural communities by providing life skills training and advocacy support.
- 03 **Countering Violent Extremism:** We engage communities in addressing community socio-economic vulnerability of women and youth through creation of peacebuilding initiatives, promotion and adoption of alternative income generating venture.
- 04 **Youth4Investment:** Through the "*Twogere*" program, WDF engages young positive women, youth and women in universities, schools, and communities in promotion of knowledge alignment towards job creation, vocational skilling, and entrepreneurship.



OUR KEY MILESTONES FOR 2021-2022:

1 GBV Prevention Mechanism: Through the "Twogere" program, WDF has conducted 2 (Two) research publications on GBV status of sampled regions in 2020 and so far has successfully completed 2 interactive forums on GBV prevention, 25 community dialogues on GBV prevention, rescued 15 pregnant and sexually abused girls, and 10 mitigation sessions on Teenage pregnancies and early child forced marriages in Eastern Uganda and Western Uganda.

2 Skills Training for Youth and AGYW: WDF has equipped at least 3,000 young positive women, youth and AGYW with a diverse range of skills, including business, life skills, and various vocational skills such as bakery, food value addition, seed variety multiplication, briquettes making, liquid/bar soap production, reusable pads, beading, and more.

3 Menstrual Hygiene Management: WDF has conducted 35 sessions on menstrual hygiene management with 2195 girls and 869 boys. In addition, these have been trained on how to make reusable pads as a way to boost the confidence of Adolescent girls and young women in managing their menstrual needs.

4 Formation of School Clubs: WDF has formed at least 30 with girls and boys in schools and 10 peace building groups in communities as a strategic approach for knowledge and skills sharing to the wider group in communities.



WHAT WE SEE:



Girl Champions in Mayuge district after the Essay Writing competition awareness session on Nutrition, Food security and WASH practices posing for a group picture.

In August 2022, with support from SFN, UBF and friends, we co-organized a 3 days intensive workshop with over 162 participants of the Urantia Book as a way to build synergies and response to complex questions from readers, strengthen literacy levels and formation of small reader groups.



University Scholars being engaged through our #Youth4Investment Program workshop held at Makerere University Business School, Nakawa on Employment readiness.

Under the #Girl2Girl Empowerment project, adolescent girls being engaged on the Dangers of Early pregnancy and Menstrual hygiene myths in Budaka by Mayu during Field engagements of WDF.



Rural Inclusion

Financial Inclusion For All





4 THE RIGHT2GROW PROGRAM

The **Right2Grow Program** is a significant initiative funded by the Dutch government through The Hunger Project Uganda as the Lead Implementer. WDF is glad to be among the CBO Sub-Grantees of the Hunger Project Uganda and the MCLD Uganda Chapter implementing in the districts of Mayuge and Bugweri in Eastern Uganda to mobilize grassroots communities with a special focus on women, breastfeeding women, infant young fathers and other marginalized groups in amplifying their involvement in local government budgetary processes, demand for service delivery, strengthen community advocacy efforts, collecting data and sharing their experiences related to food security, nutrition, Water, Sanitation, and Hygiene (WASH) in “Getting to zero undernutrition and zero people without access to basic WASH services” and holding key stakeholders accountable and reliable in delivering essential services in communities.



HOW WE DO IT:

- 01 Engaging Community Members:** Through the R2G program, WDF actively engages community members especially AGYW, young positive women, mothers, breastfeeding women, young fathers, PWDS, marginalized groups, CSOs, and local leaders in various activities to capacitate them in articulating their needs and advocating for their rights and adoption of key Food security, Nutrition and WASH practices.
- 02 Community Storytelling and Data collection:** We engage communities through community-driven data collection and storytelling efforts, where communities are at the front of sharing their experiences, challenges, aspirations and identify areas of improvement related to Food security, nutrition and WASH services.
- 03 Community-Led Dialogues:** We engage community members through consultative dialogues as a platform for open discussions and interface meetings with local leaders as an enabler for community members to express their concerns and aspirations related to food security, nutrition and WASH services.
- 04 School Engagements:** We also engage schools through creative writing and debates as an enabler for Learners (School going children) to express themselves freely on issues of Food Security, Nutrition, and WASH practices as a way to promote awareness and engagement among learners on nutrition and WASH topics.
- 05 Good feeding practices:** We also engage communities, health centers and schools on best feeding practices and how to prepare nutritious meals for children under 5 (Five), growing nutritious vegetables and more.



OUR KEY MILESTONES FOR 2021-2022:

1 **Strengthened Local Voices:** Through the Right2Grow Program, WDF has engaged over 1,500 community members to raise their voices and articulate their needs, ensuring their concerns are heard and addressed.



2 **Community Needs assessments:** WDF has successfully conducted two (2) pilot household mapping exercises as a trigger to better understand the food security, nutrition, and WASH challenges at the community level for amplified evidence based advocacy efforts at Local government level.



OUR KEY MILESTONES FOR 2021-2022:

- 3** **Accountability and Improved Services:** We have engaged 240 community members (Religious and cultural leaders, community support groups, women and youth leaders, local council leaders and district leaders) through Community-led WASH, Nutrition and Food security strengthening sessions at community and district level.



- 4** **School Championships:** In 2022, WDF conducted a competitive School-based Easy writing competition with learners in 10 schools of Mayuge district as a way to trigger learners understanding and sharing of their experiences on critical issues of Food Security, Nutrition, and WASH practices from household level, school and community level.



CONT:

5 **Child Feeding Practices:** Through the R2G program, WDF has enhanced the feeding practices at household level through conducting practical (5 sessions so far) nutritious food preparation for children under 5 years, school meal enhancement and community-led feeding to break the cycle of malnutrition.



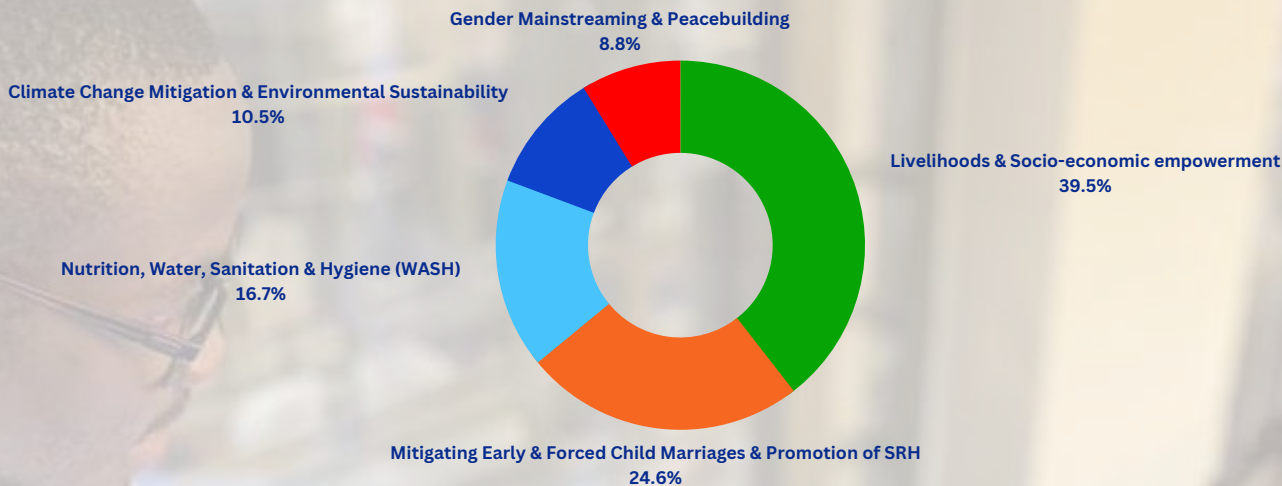
6 **Enhanced Community Well-being:** Through advocacy and rights-based approaches, WDF has contributed to improving food security, nutrition, and access to clean water and sanitation services for communities in Mayuge and Bugweri districts through triggering community-led service delivery, shared costs modeling and rehabilitation of water sources.



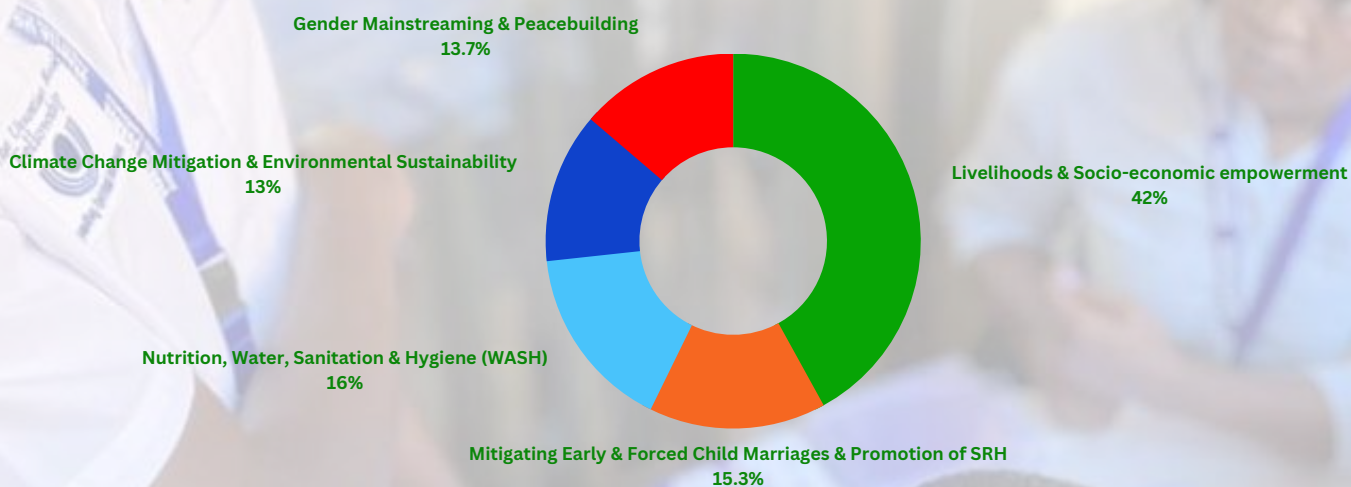


REGIONAL BASED ENGAGEMENT TRACKER FOR 2021-2022:

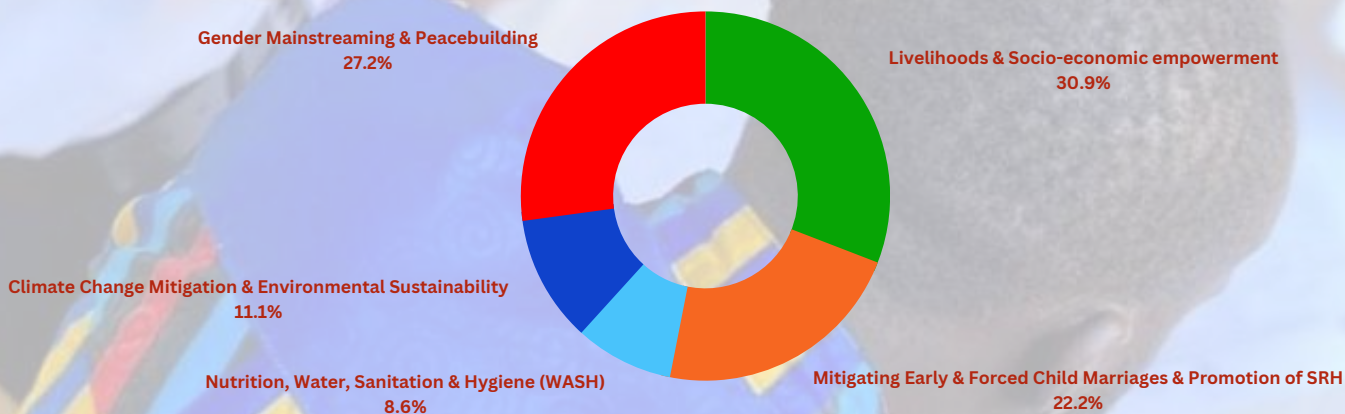
01 **BUSOGA REGION:**



02 **RWENZORI REGION:**

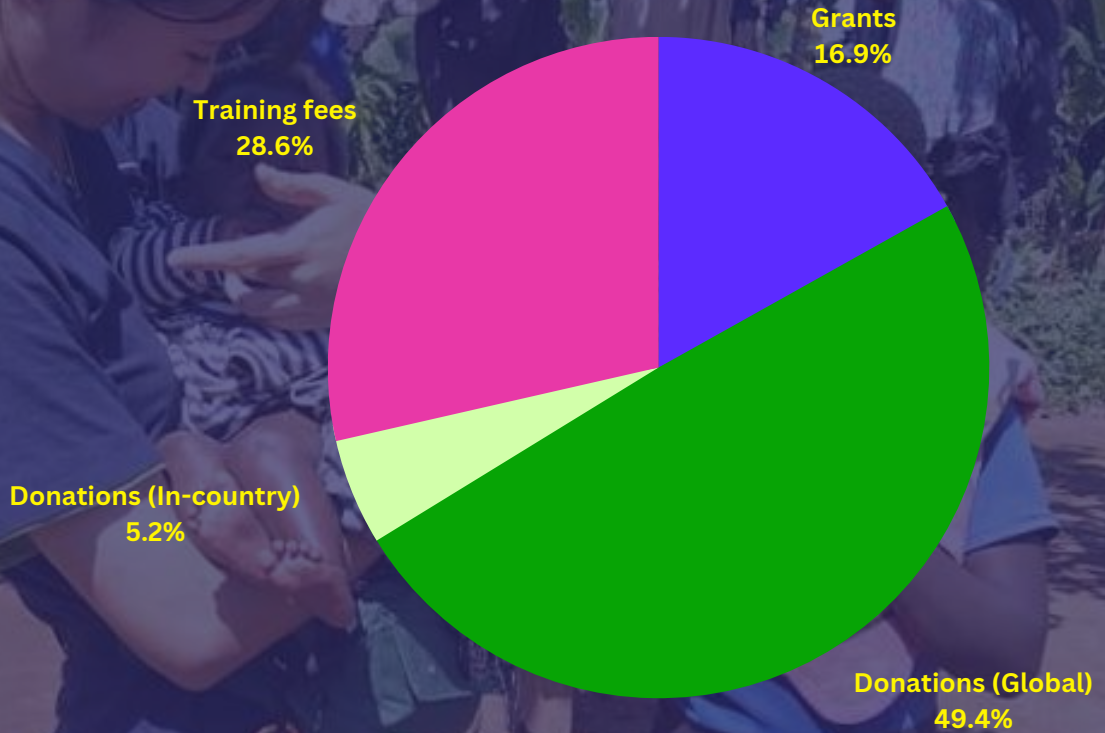


03 **CENTRAL REGION:**

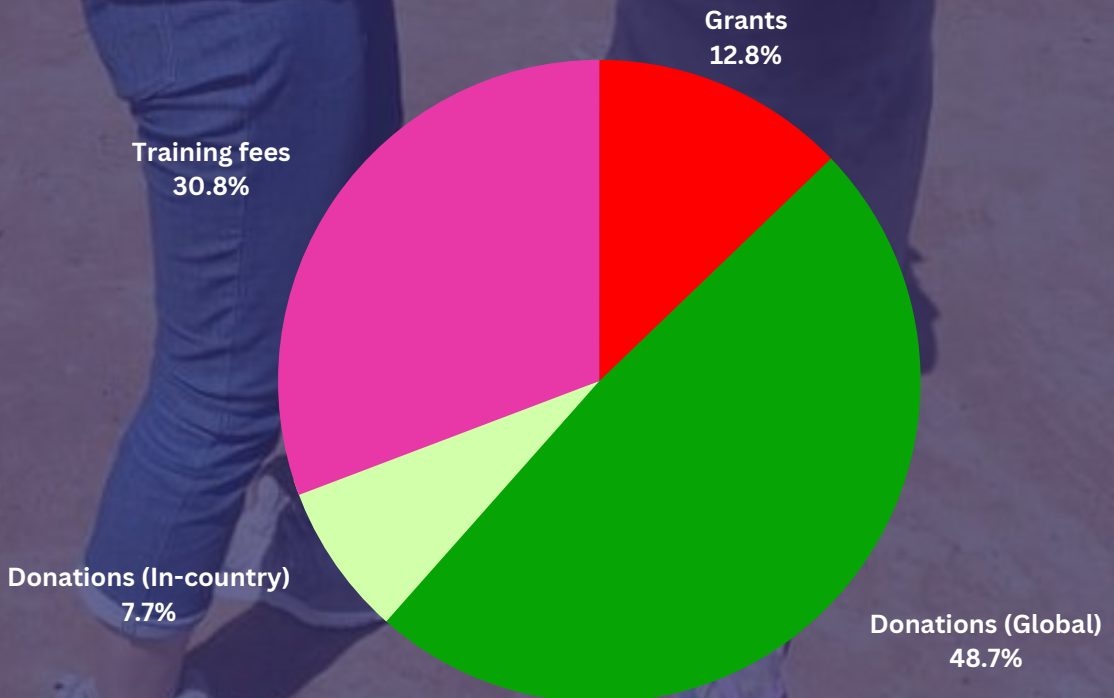


FINANCIAL PERFORMANCE TRACKER FOR 2021-2022

YEAR 2021

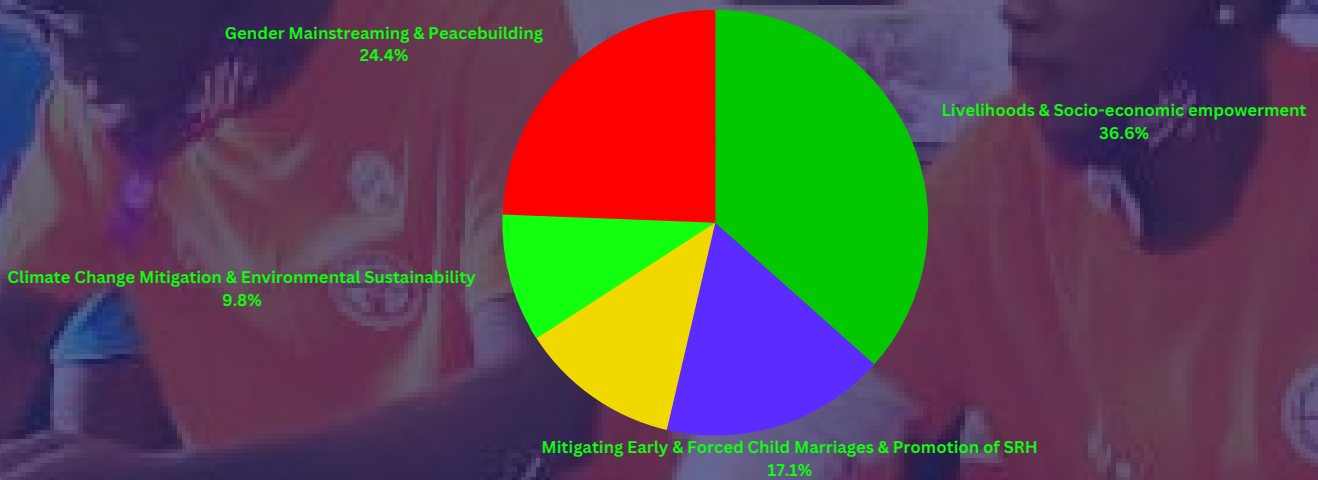


YEAR 2022

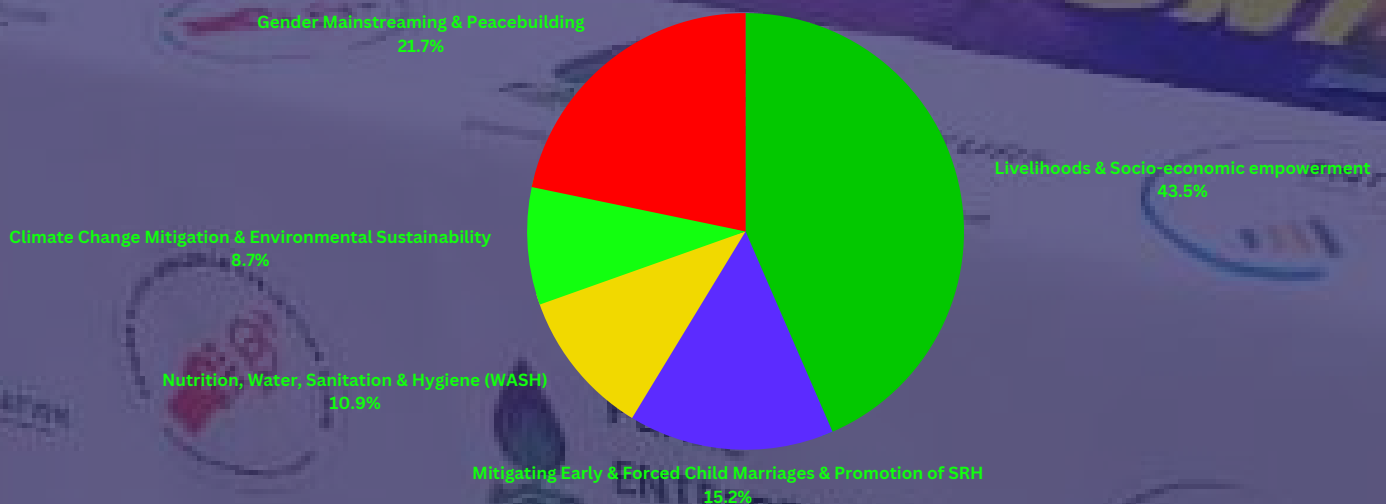


PROGRAM EXPENDITURE TRACKER FOR 2021-2022

YEAR 2021



YEAR 2022

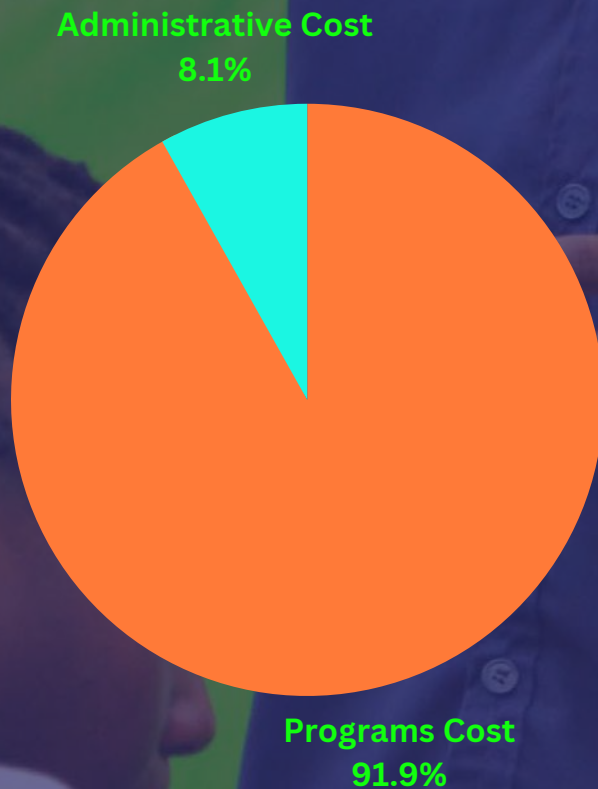


ADMINISTRATIVE COST VS PROGRAMS COSTS FOR 2021-2022

YEAR 2021



YEAR 2022



2022 FINANCIAL INCOME STATEMENTS EXTRACT

	NOTES	2022 USHS	2021 USHS
REVENUE			
Funds from WDF Friends		205,320,500	95,062,000
Grants and Other incomes		110,729,500	81,299,500
TOTAL INCOME:		316,050,000	176,361,500
LESS:			
OPERATING EXPENSES			
Administration Expenses	3(i)	77,742,000	76,111,000
Program Costs	3(ii)	244,248,000	71,375,632
TOTAL EXPENSES:		321,990,000	147,486,632
Excess Income over Expenditure		(5,940,000)	28,874,868

2022 STATEMENT OF FINANCIAL POSITION EXTRACT

	NOTES	2022 USHS	2021 USHS
ASSETS			
CURRENT ASSETS			
Receivables		-	-
Cash at hand	1(i)	26,355,832	22,149,910
Bank Balance	1(ii)	12,520,000	17,819,984
TOTAL ASSETS		38,875,832	39,969,894
LIABILITIES			
General Fund	2	36,887,124	39,969,894
CURRENT LIABILITIES:			
Accrued Charges		1,988,708	-
TOTAL LIABILITIES:		38,875,832	39,969,894



2022: WE ARE PROUD TO HAVE WORKED, TRAINED OR SUPPORTED BY THE FOLLOWING:



Amani Initiative
....together we can make a difference!





Enriching Communities
www.wdfug.org

SPECIAL THANKS TO OUR AMAZING STAFF, VOLUNTEERS & INTERNS:



MATTE - TL



RACHEL N



VICTORIA P



DINAH N.



SHAMINAH B.



DEOGRATIUS N.



ERIMU R.



JOAN N.



SIMON N.



PRISTON P.



JIMMY



RONALD



KITIMBO J.



RHODA N.



ROGERS M.



PETER M.



PROSSY A.



WAMBUI J.



SHARON A.



JOAN N.



KADHAMA L.



AMOS A.



ESTHER N.



ELVIS K.



JACKSON M.



AMANIO A.



SANYU K.



SANDRA



TESSY N.



LYNN M.



PETER



RITAH



SHARON K.



JOSEPHINE N.



JOHNPAUL

GLOBAL MAISHA MZURI PROGRAM SCHOLARS:



VERA K



MONICA C.



KAAINAT K.



JENNY



GRETA



GRETA B.



MARGHERITA



CECILIA D.



CHUYING-PAN



ALEXIA



VERONIKA



CLARA



VASILISA



RAYMOND J.



SUE-Y.



LAILAH



LUCY



KARLEEN



MAYO S.



HERITAGE N.



BEN R.



JAN D.



TEODORA



INES



ELISA G.



AKUA



KANJI T.



NINAH



ANASTASIA



DEYA



HELEN



CHAUDHARY M.



JOAN H.



KENNEDY



CAROLINE



CONTACT US



+256 (0) 393 224 664



info@wdfug.org



www.wdfug.org



WILKINSON DEVELOPMENT
FOUNDATION
Changing Lives Today